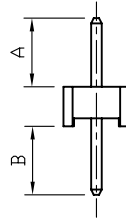
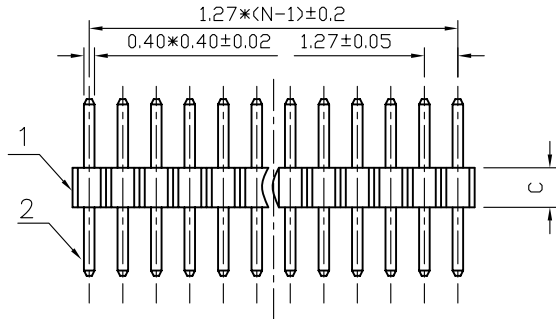
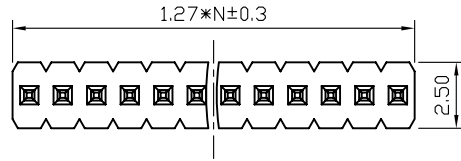


REV.	DESCRIPTION	DRAWN	CHECKED	APPROVED
A	NEW RELEASE	LJH 06/24/05'		



TYPE	DIM A	DIM B
1	2.60	2.60

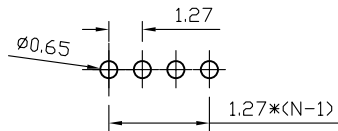
NOTES:

- MATERIAL
 - INSULATOR:PBT(UL 94V-0).
 - CONTACT MATERIAL:COPPER ALLOY.
- SPECIFICATION
 - CURRENT RATING:1.0 Amp.
 - INSULATION RESISTANCE:500MΩ Min.
 - DIELECTRIC WITHSTANDING:300VAC.
 - CONTACT RESISTANCE:50mΩ Max.
 - OPERATING TEMPERATURE:-40°C TO+105°C.
- PART NUMBER: DS1031-01
- PRODUCT NUMBER CODE:

DS1031-01 - X X X X X X X

- DIM.A B TYPE
1: TYPE 1
- HOUSING HEIGHT(DIM. C)
1: 1.00mm
2: 1.50mm
3: 2.00mm
- MOUNTING TYPE
V: VERTICAL TYPE
- HOUSING COLOR
B:BLACK
- CONTACT PLATING
8: FULL GOLD FLASH
- CONNECTOR TYPE
P:PLUG
- No.OF CONTACTS
1*1-1*40
- SERIES No.
DS1031-01

N:NUMBER OF CONTACTS



RECOMMEND PCB LAYOUT(TOLERANCE=±0.05)

GENERAL TOLERANCE		ANGLE TOLERANCE		PROJECTION		TITLE	1.27mm PITCH PIN HEADER SINGLE ROW STRAIGHT		
X.	±0.60	X.	±5'	UNITS	mm	SHEET SIZE	A4	SERIES	DS1031-01 SERIES
.X	±0.38	.X	±3'	PLL1.27-1x40 1031-01					
.XX	±0.25	.XX	±2'						
2	CONTACT		COPPER ALLOY	DRAWING TYPE		CUSTOMER			
1	HOUSING		THERMOPLASTIC	SCALE	1:1	SHEET	1 OF 1		
ITEM	PART NAME	PART NO.	MATERILAS	FINISHED	DRAWING NO.	C-DS1031-01-XXXXXXX			

H

H