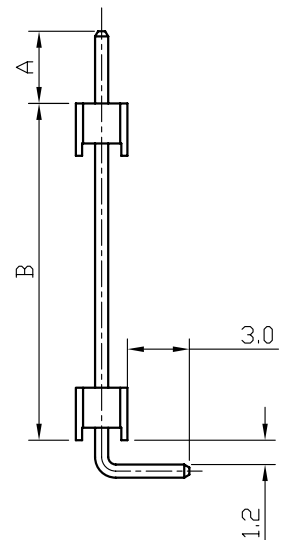
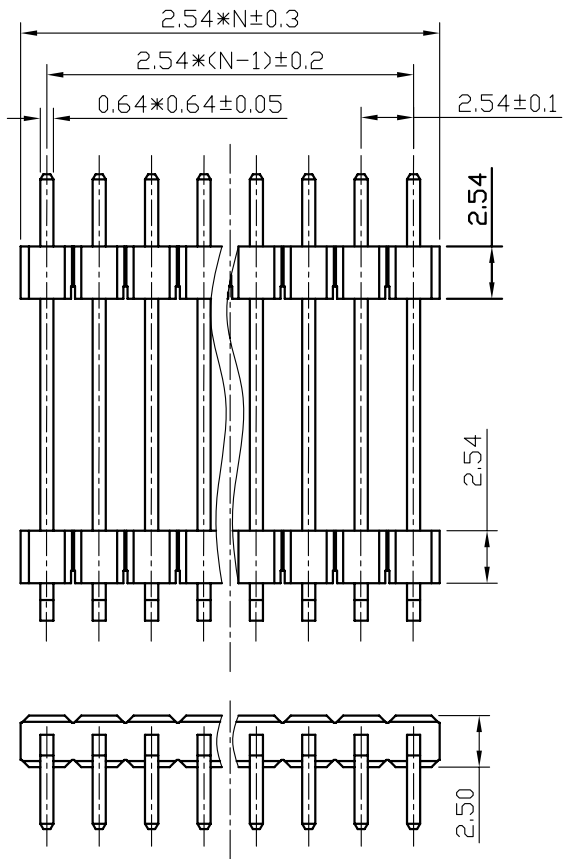


REV.	DESCRIPTION	DRAWN	CHECKED	APPROVED
A	NEW RELEASE	LJH 05/06/05'		



NOTES:

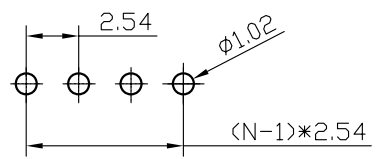
- MATERIAL
 - INSULATOR:PBT(UL 94V-0).
 - CONTACT MATERIAL:COPPER ALLOY.
- SPECIFICATION
 - CURRENT RATING:1.5 Amp.
 - INSULATION RESISTANCE:1000MΩ Min.
 - DIELECTRIC WITHSTANDING:600VAC.
 - CONTACT RESISTANCE:50mΩ Max.
 - OPERATING TEMPERATURE:-40°C TO+105°C.
- PART NUMBER: DS1029-02
- PRODUCT NUMBER CODE:

DS1029-02 - X X X X X X

- DIM.A B YPE
1: TYPE 1
- MOUNTING TYPE
R: RIGHT ANGLE TYPE
- HOUSING COLOR
B:BLACK
- CONNECTOR PLATING
8: FULL GOLD FLASH
- CONECT TYPE
P:PLUG
- No.OF CONTACTS
1*1-1*40
- SERIES No.
DS1029-02

N: NUMBER OF CONTACTS

TYPE	DIM A	DIM B
1	3.50	16.3



RECOMMEND PCB LAYOUT(TOLERANCE=±0.05)

GENERAL TOLERANCE		ANGLE TOLERANCE		PROJECTION		TITLE	2.54mm PITCH PIN HEADER	
X.	±0.60	X.	±5'	UNITS	mm		SINGLE ROW RIGHT ANGLE	
.X	±0.38	.X	±3'	SHEET SIZE	A4	SERIES	DS1029-02 SERIES	
.XX	±0.25	.XX	±2'	PLH-40R1 1029-02				

2	CONTACT		COPPER ALLOY	GOLD PLATED	DRAWING TYPE	CUSTOMER		
1	HOUSING		THERMOPLASTIC	UL 94 V-0	SCALE	1:1	SHEET	1 OF 1
ITEM	PART NAME	PART NO.	MATERILAS	FINISHED	DRAWING NO.	C-DS1029-02-XXXXXX		