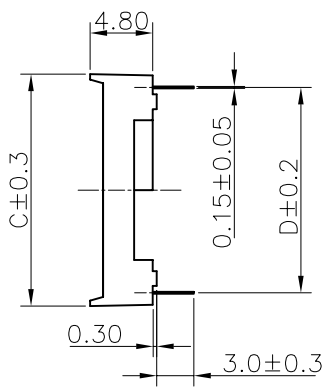
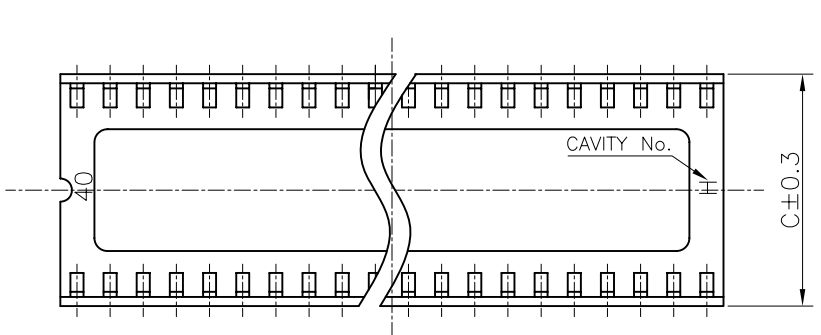
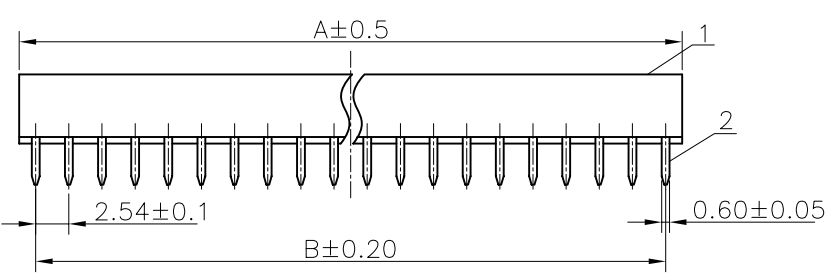


REV.	DESCRIPTION	DRAWN	CHECKED	APPROVED
A	NEW RELEASE	LJH 09/28/05'		



- NOTES:
- ELECTRICAL CHARACTERISTICS:
    - CONTACT RESISTANCE: 20mΩ Max.
    - DIELECTRIC WITHSTANDING VOLTAGE: 500V AC(rms) FOR 1 MINUTE.
    - INSULATION RESISTANCE: 1000MΩ Min.
  - ENVIRONMENT CHARACTERISTICS:
    - OPERATING TEMPERATURE: 0°C~+85°C.
    - STORAGE TEMPERATURE: -20°C~+70°C.
  - PART NUMBER: DS1009
  - PRODUCT NUMBER CODE: DS1009 - X X X X X

Central support  
 S: W/ central support  
 X: W/O centralsupport  
  
 Width(DIM D)  
 N: 7.62mm(06~24p)  
 W: 15.24mm(28~64p)  
  
 Contact plating  
 T1: Tin  
  
 Contact type  
 A: W/O kink  
 B: W/ kink  
  
 No.OF CONTACTS  
 06 08 14 16 18 20  
 24 28 32 40 42 48  
  
 Series No.  
 DS1009



Position	Dimension			
	A	B	C	D
06	7.62	5.08	10.16	7.62
08	10.16	7.62	10.16	7.62
14	17.78	15.24	10.16	7.62
16	20.32	17.78	10.16	7.62
18	22.86	20.32	10.16	7.62
20	25.40	22.86	10.16	7.62
24	30.48	27.94	10.16	7.62
24	30.48	27.94	17.78	15.24
28	35.56	33.02	10.16	7.62
28	35.56	33.02	17.78	15.24
32	40.64	38.10	17.78	15.24
40	50.80	48.26	17.78	15.24
42	53.34	51.00	17.78	15.24
48	40.96	58.42	17.78	15.24
64	81.28	78.74	17.78	15.24

GENERAL TOLERANCE	ANGLE TOLERANCE	PROJECTION	TITLE	IC SOCKET PITCH 2.54mm(0.100)
X. ±0.60	X. ±5°	UNITS	mm	
.X ±0.38	.X ±3°	SHEET SIZE	A4	SERIES DS1009 SERIES
.XX ±0.25	.XX ±2°	SCS 1009		

2	CONTACT		COPPER ALLOY	TIN PLATED	DRAWING TYPE	CUSTOMER	
1	HOUSING		THERMOPLASTIC	UL 94 V-0	SCALE	1:1	SHEET 10F1
ITEM	PART NAME	PART NO.	MATERILAS	FINISHED	DRAWING NO.	C-DS1009-XXXXX	